

6-A-Day – Computer Science GCSE (24)

Q1

A tablet computer has built-in input devices.

Identify **two** input devices that can be built into a tablet computer and for each state how it could be used to input data.

Device 1

How it could be used

.....

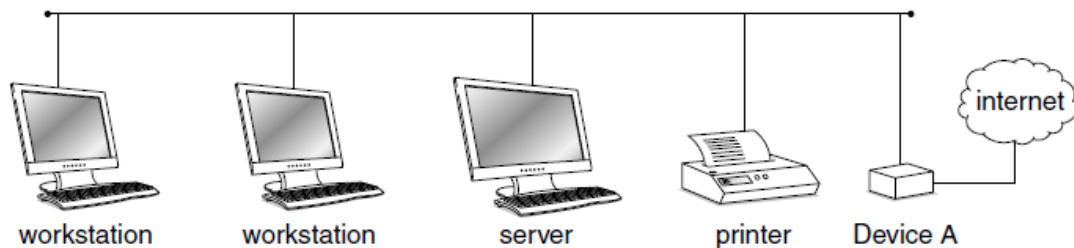
Device 2

How it could be used

..... [4]

Q2

The following diagram shows how the computers in Mr Singh's office are connected to each other to form a LAN.



Give **three** functions of the server in this network.

1

2

3

..... [3]

Q3

Describe how the following system maintenance utilities are used.

Automatic update

.....

..... [4]

Q4	<p>Explain how the clock speed and the cache size of a CPU affect its performance.</p> <p>Clock speed</p> <p>.....</p> <p>.....</p> <p>.....</p> <p>..... [2]</p>
Q5	<p>The memory of a computer contains data and instructions in binary.</p> <p>(a) Explain why computers use binary.</p> <p>.....</p> <p>.....</p> <p>.....</p> <p>..... [2]</p>
Q6	<p>Describe how instructions are stored in binary.</p> <p>.....</p> <p>.....</p> <p>.....</p> <p>.....</p> <p>.....</p> <p>..... [3]</p>